

113FT001 / A

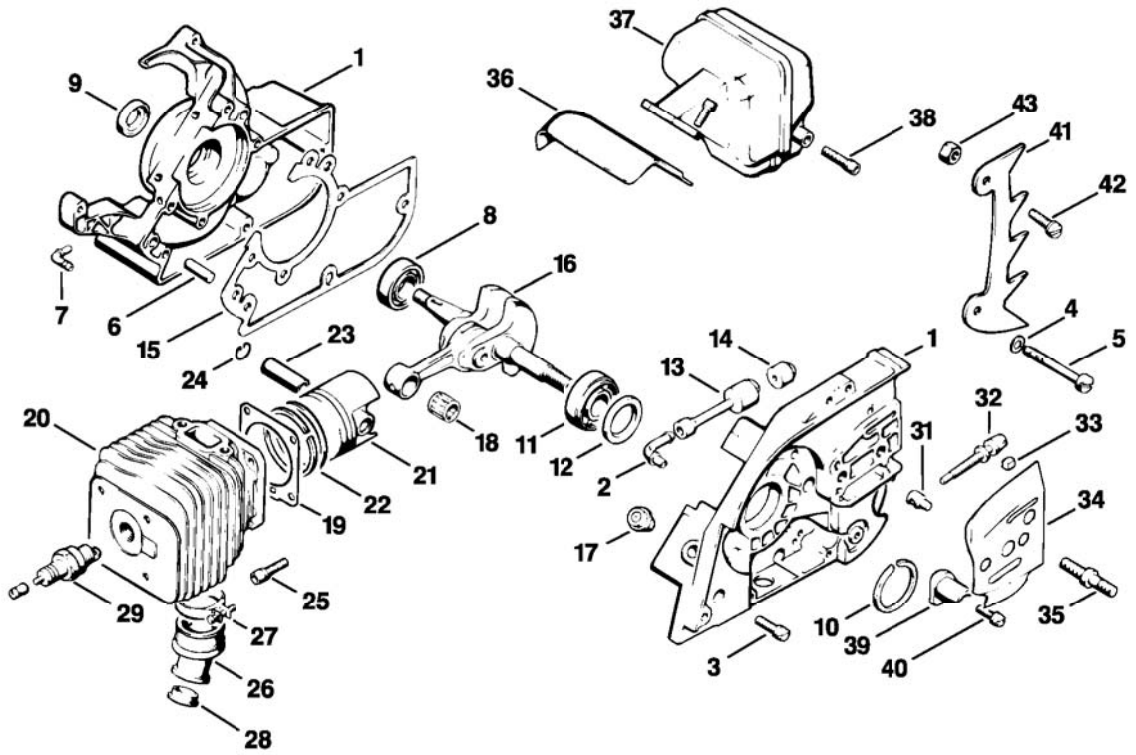
Illustration A Crankshaft, Cylinder

Printed from MediaCat

Ref.Nr.	Item code	Quantity	Description
1	1113 020 2102	1	Crankcase □ 2 - 7
2	1118 028 7400	1	Connector
3	9048 216 1010	5	Pan head screw M5x18
4	9307 021 0120	1	Washer 5.3
5	9043 216 1100	1	Pan head screw M5x45
6	9371 470 3120	2	Cylindrical pin 6x20
7	1110 122 3900	1	Elbow connector
8	9503 003 0310	1	Grooved ball bearing 6002
9	9640 003 1340	1	Oil seal 13x22x5
10	9465 620 2620	1	Snap ring 37
11	9523 003 4440	1	Grooved ball bearing 15x35x13.5 □ 12
12	9640 003 2390	1	Oil seal 21.05x29.6x4
13	1106 647 9404	1	Hose
14	1106 640 3801	1	Pickup body
15	1113 029 0505	1	Gasket
16	1113 030 0400	1	Crankshaft
17	1113 640 9100	1	Valve
18	9512 003 2340	1	Needle cage 10x14x13
19	1118 029 2305	1	Cylinder gasket
20	1113 020 1203	1	Cylinder with piston Ø 45mm □ 21 - 24
21	1113 030 2003	1	Piston Ø 45mm □ 22 - 24
21	1113 030 2001	1	Piston Ø 44mm □ 22 - 24

(1) 030, (2) 031

Illustration A Crankshaft, Cylinder
Printed from MediaCat



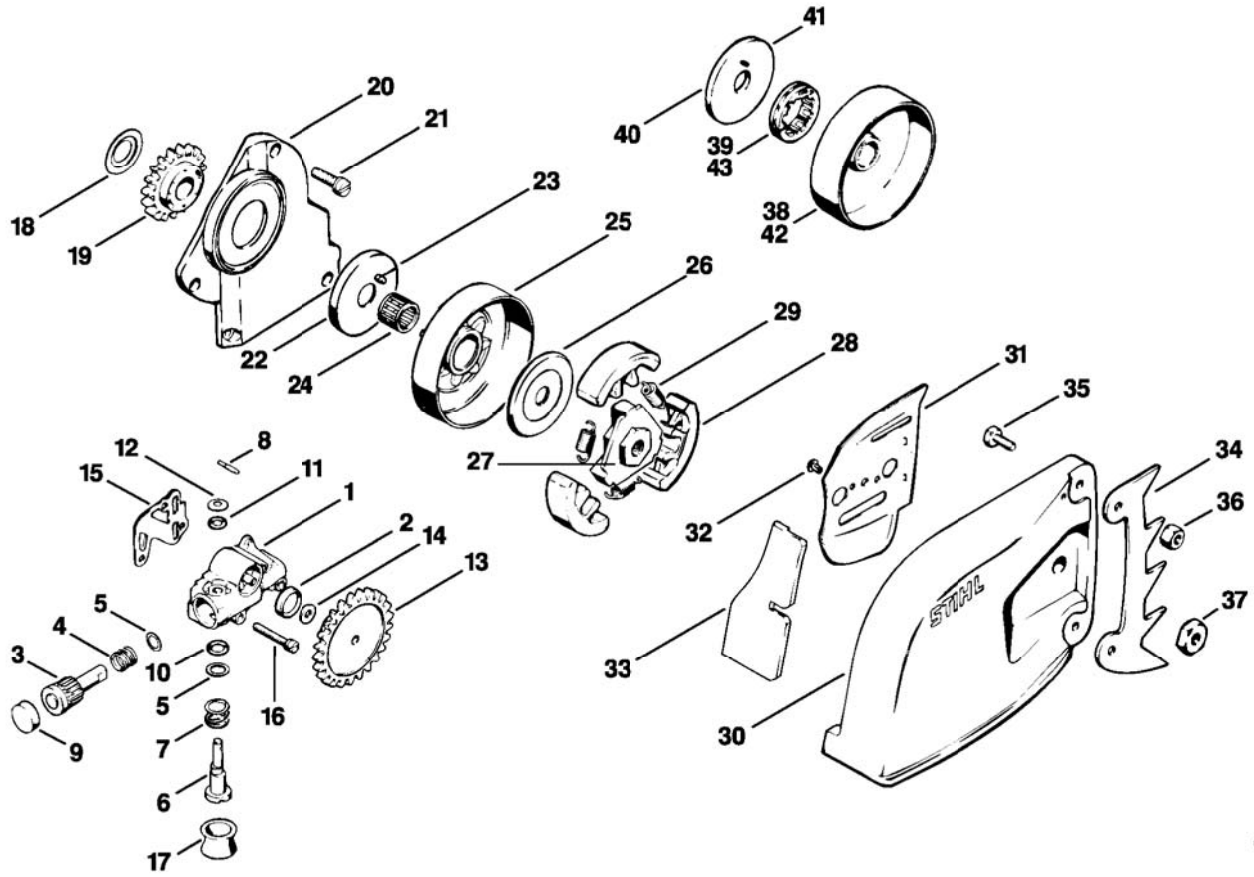
113FT001 / A

Illustration A Crankshaft, Cylinder

Ref.Nr.	Item code	Quantity	Description
	1113 030 2011	1	Piston Ø 44mm □ 22 - 24
22	1113 034 3005	2	Piston ring Ø 45mm
22	1110 034 3000	2	Piston ring Ø 44x1.5mm
23	1110 034 1500	1	Piston pin 10x32
24	9462 650 1000	2	Snap ring 10
25	9036 341 1010	4	Socket head screw M5x18
26	1113 141 2201	1	Manifold
27	9771 021 2540	1	Hose clip Ø 29x7
28	1113 141 1805	1	Sleeve
29	1110 400 7005	1	Spark plug Bosch WSR 6 F
31	1110 664 1500	1	Tensioning nut
32	1110 664 1600	1	Adjusting screw
33	1110 021 9000	1	Clamp
34	1113 664 1001	1	Inner side plate
35	1110 664 2400	2	Collar screw
36	1113 087 3601	1	Air guide plate
37	1113 140 0600	1	Muffler
38	9036 341 0980	3	Socket head screw M5x16
39	1114 656 7700	1	Chain catcher
40	9021 319 0670	1	Pan head screw M4x14
41	1110 664 0501	1	Bumper spike (B)
42	9079 319 0960	1	Flat head screw M5x12 (B)
43	9214 320 0700	1	Lock nut M5 (B)

(1) 030, (2) 031

Illustration B Oil pump, Clutch, Chain sprocket cover



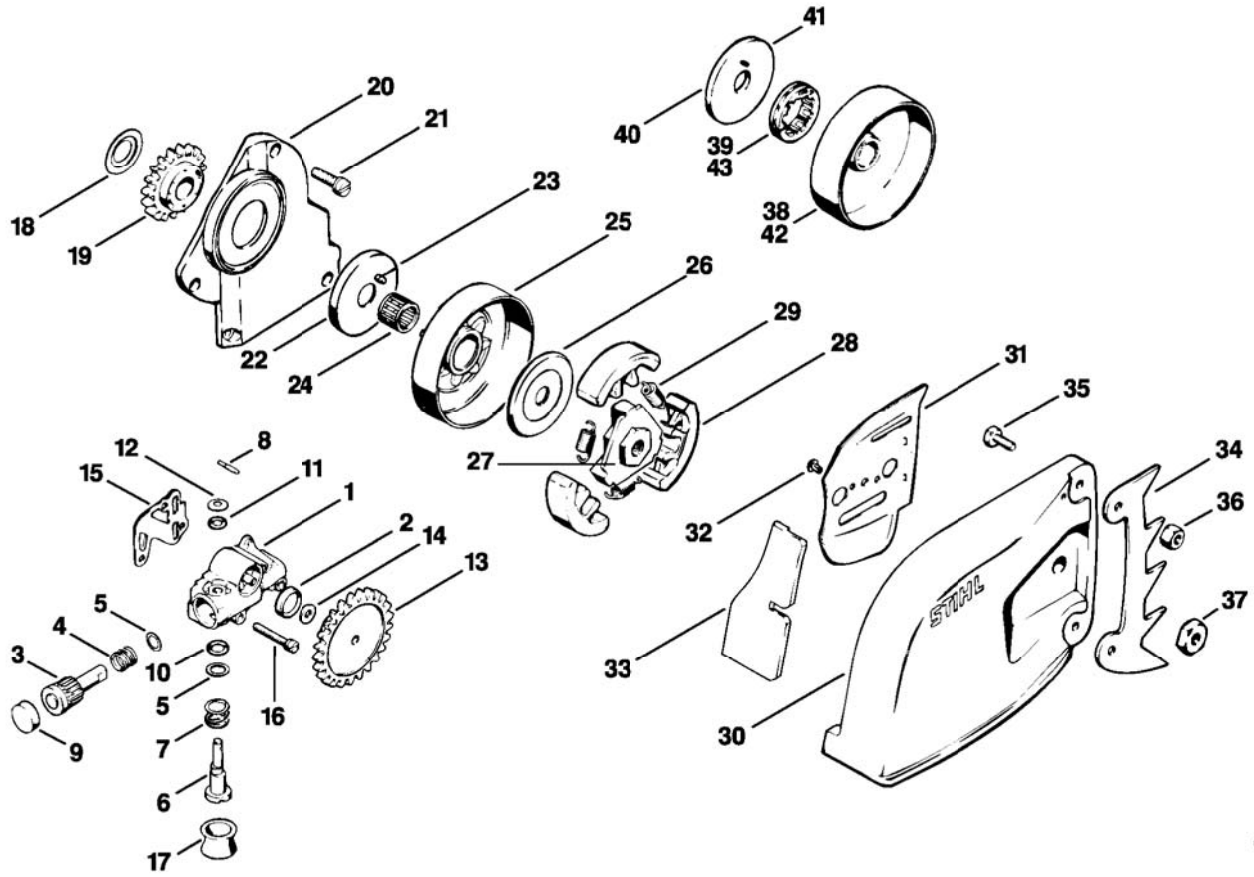
113FT0031A

Illustration **B** Oil pump, Clutch, Chain sprocket
cover

Ref.Nr.	Item code	Quantity	Description
	1113 640 3201	1	Oil pump □ 1 - 14
1	1117 640 3001	1	Pump housing □ 2
2	9643 950 1160	1	Sealing ring 12x16x3
3	1117 647 0601	1	Pump piston
4	0000 997 1010	1	Compression spring
5	0000 958 0701	2	Washer
6	1117 647 4801	1	Control bolt
7	0000 997 1200		Helical spring
8	1117 647 9800	1	Pin
9	0000 988 6220	1	Plug
10	9646 945 0490	1	O-ring 7x1.5
11	9646 945 0230	1	O-ring 5x1.25
12	9486 648 0100	1	Cup spring 10
13	1113 640 7100	1	Worm
14	0000 958 0402	1	Washer
15	1117 649 1100	1	Gasket
16	9048 319 0740	3	Pan head screw M4x25
17	0000 989 0401	1	Rubber ring
18	1113 162 8903	1	Thrust washer
19	1113 647 1802	1	Spur gear
20	1113 021 1100	1	Cover
21	9048 319 0660	4	Pan head screw M4x12
22	1113 030 7500	1	Cover washer □ 23
23	9517 003 0490	1	Cylindrical roller 2.5x16.8
24	9512 933 3000	1	Needle cage 12x15x13
25	1113 640 2000	1	Chain sprocket 3/8"
25	1113 640 2005	1	Chain sprocket 0.325"

(1) 030, (2) 031

Illustration B Oil pump, Clutch, Chain sprocket cover



113FT0031A

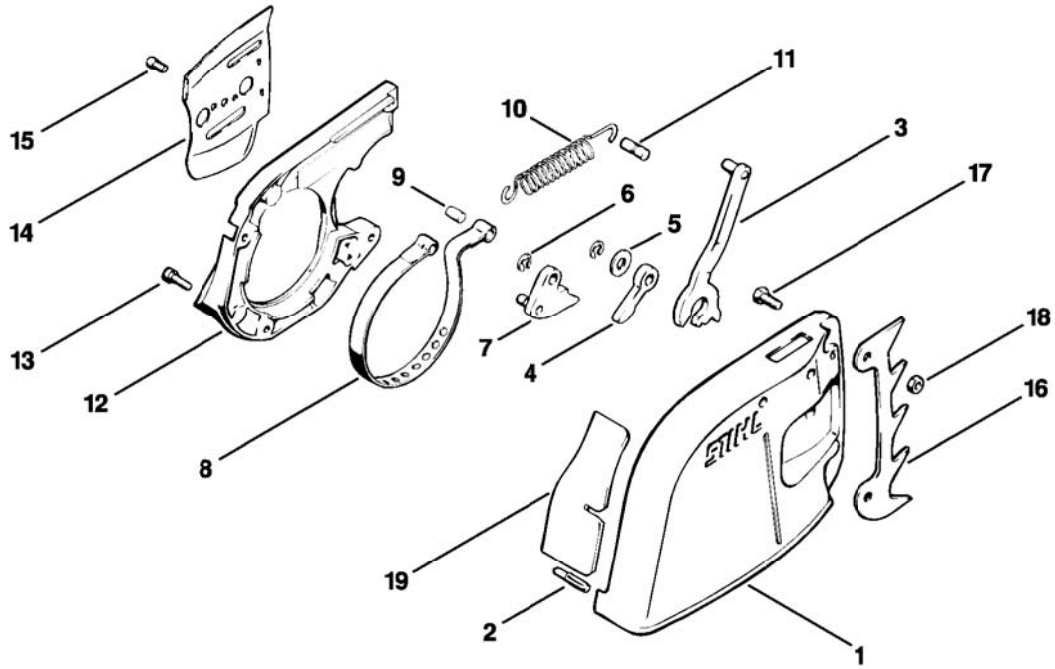
Illustration **B** Oil pump, Clutch, Chain sprocket cover

Ref.Nr.	Item code	Quantity	Description
26	1110 162 8900	1	Washer
	1113 160 2010	1	Clutch □ 27 - 29
27	1113 162 3205	1	Carrier
28	1113 162 0802	3	Clutch shoe
29	0000 997 5811	3	Tension spring
30	1113 648 0401	1	Chain sprocket cover
31	1113 664 1100	1	Outer side plate
32	9441 065 1910	2	Round head rivet 3x8
33	1113 656 1501	1	Guard plate
34	1110 664 0501	1	Bumper spike
35	9008 319 0960	2	Hexagon head screw M5x12
36	9214 320 0700	2	Lock nut M5
37	0000 955 0801	2	Collar nut M8
	1113 007 1040	1	Rim sprocket kit 3/8" 7T (B) □ 38 - 41
38	1113 640 2025	1	Rim sprocket kit □ 39
39	0000 642 1230	1	Rim sprocket 3/8" 7T
40	1113 030 7501	1	Cover washer □ 41
41	9517 003 0460	1	Cylindrical roller 2.5x12.8
	1113 007 1041	1	Rim sprocket kit 0.325" 8T (B) □ 40 - 43
42	1113 640 2026	1	Rim sprocket kit □ 43
43	0000 642 1235	1	Rim sprocket 0.325" 8T

(1) 030, (2) 031

Illustration C Chain brake, Chain sprocket cover

Printed from MediaCat



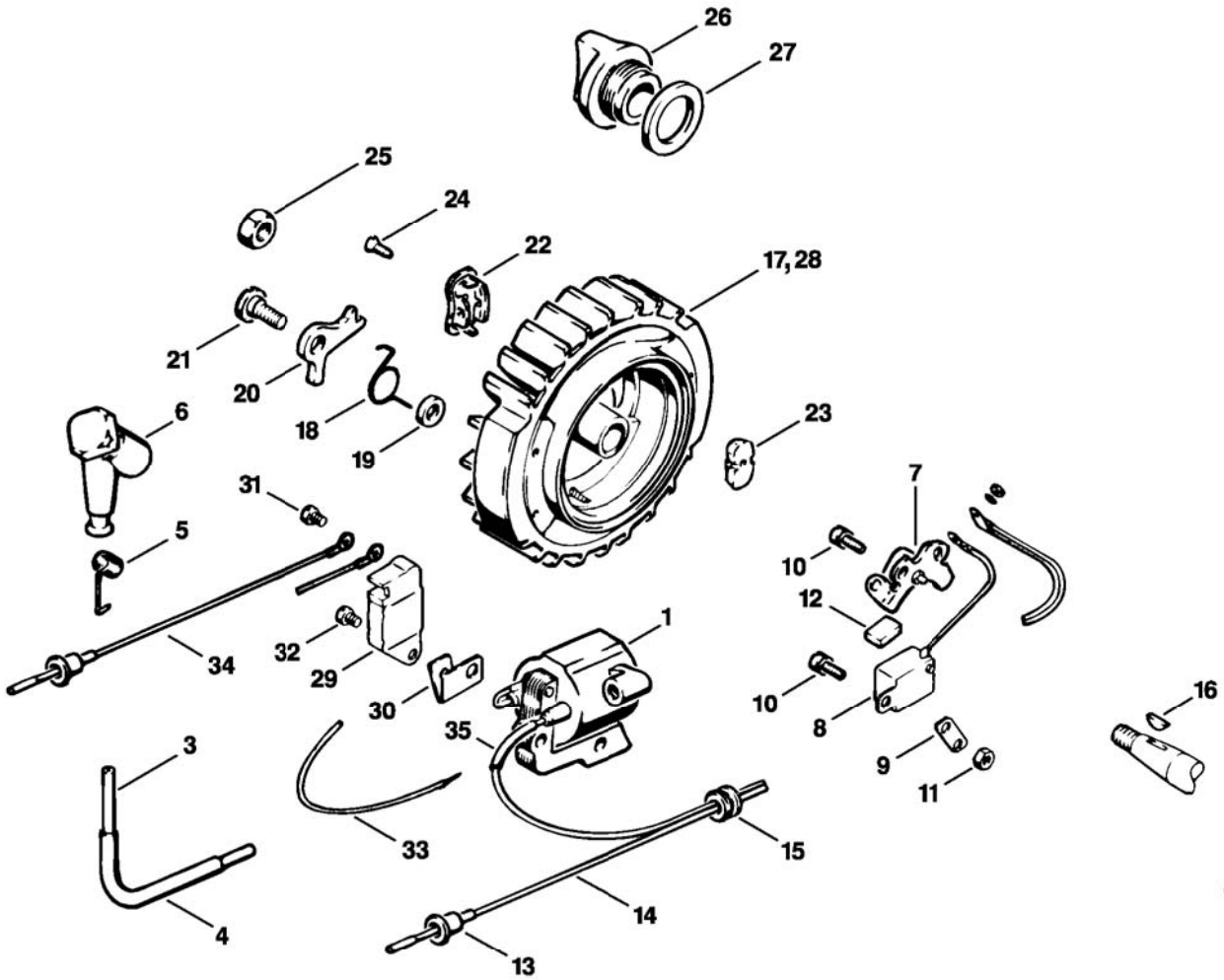
113FT0051 A

Illustration C Chain brake, Chain sprocket cover

Ref.Nr.	Item code	Quantity	Description
	1113 640 1706	1	Chain sprocket cover □ 1 - 19
1	1113 640 1705	1	Chain sprocket cover □ 2
2	0000 971 0608	1	Pin
3	1113 160 5001	1	Lever
4	1115 162 5005	1	Lever
5	0000 958 0702	1	Washer
6	9460 624 0500	2	E-clip 5
7	1113 160 5100	1	Cam
8	1113 160 5400	1	Brake band
9	1118 162 5220	1	Pin
10	1115 162 7900	1	Tension spring
11	1115 162 5220	1	Pin
12	1113 648 7700	1	Cover
13	9048 319 0660	4	Pan head screw M4x12
14	1113 664 1100	1	Outer side plate
15	9048 319 0650	1	Pan head screw M4x10
16	1110 664 0501	1	Bumper spike
17	9008 319 0960	2	Hexagon head screw M5x12
18	9214 320 0700	2	Lock nut M5
19	1113 656 1501	1	Guard plate

(1) 030, (2) 031

Illustration D Ignition armature, Flywheel



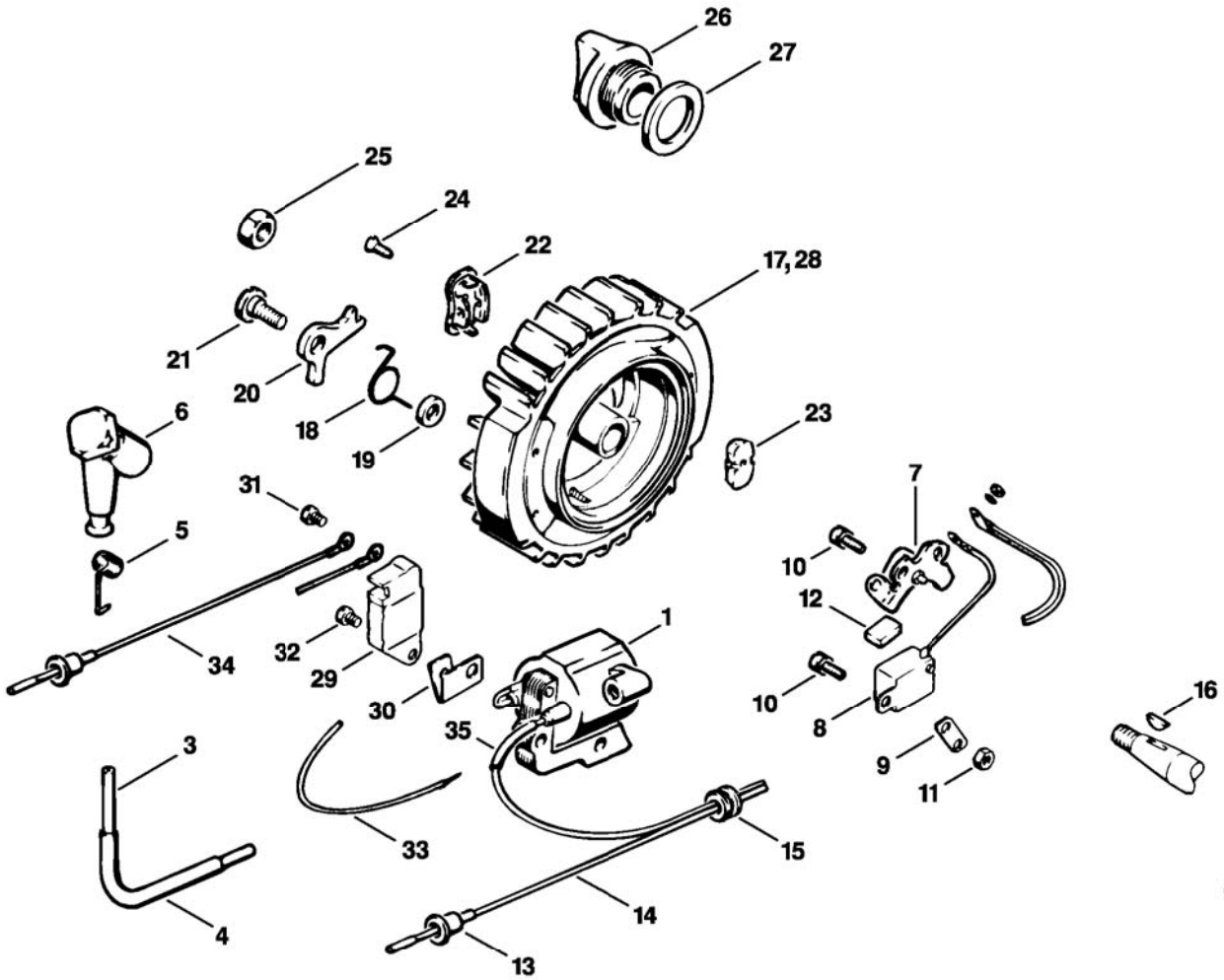
113FT0061 A

Illustration D Ignition armature, Flywheel

Ref.Nr.	Item code	Quantity	Description
1	1113 400 1300	1	Ignition coil □ 3, 4, 15, 16
1	1113 400 1301	1	Ignition coil (Electronic) □ 3, 4, 15, 16
	9048 216 1010	2	Pan head screw M5x18 (A)
3	1113 405 0600	1	Ignition lead 115mm
4	1113 405 8800	1	Hose
5	0000 998 0604	1	Torsion spring
6	1113 405 1000	1	Spark plug boot
	1113 007 1063	1	Set of condenser □ 7 - 11
7	1113 400 2000	1	Set of points
8	1118 404 3400	1	Capacitor
9	1113 405 1900	1	Bracket
10	9048 319 0650	2	Pan head screw M4x10
11	9210 260 0600	1	Hexagon nut M4
12	1111 404 4200	1	Felt wick
13	1110 432 9200	1	Grommet
14	1113 007 1010	1	Short circuit wire kit □ 15
15	0000 989 0808	1	Grommet
16	9482 435 0030	1	Woodruff key 2x3.7
17	1113 400 1200	1	Flywheel, contact breaker ignition
18	0000 998 1202	2	Torsion spring
19	9291 021 0140	2	Washer 6.4
20	1113 195 7200	2	Pawl
21	0000 951 2902	2	Oval head screw M6x3.2x12

(1) 030, (2) 031

Illustration D Ignition armature, Flywheel



113FT0061 A

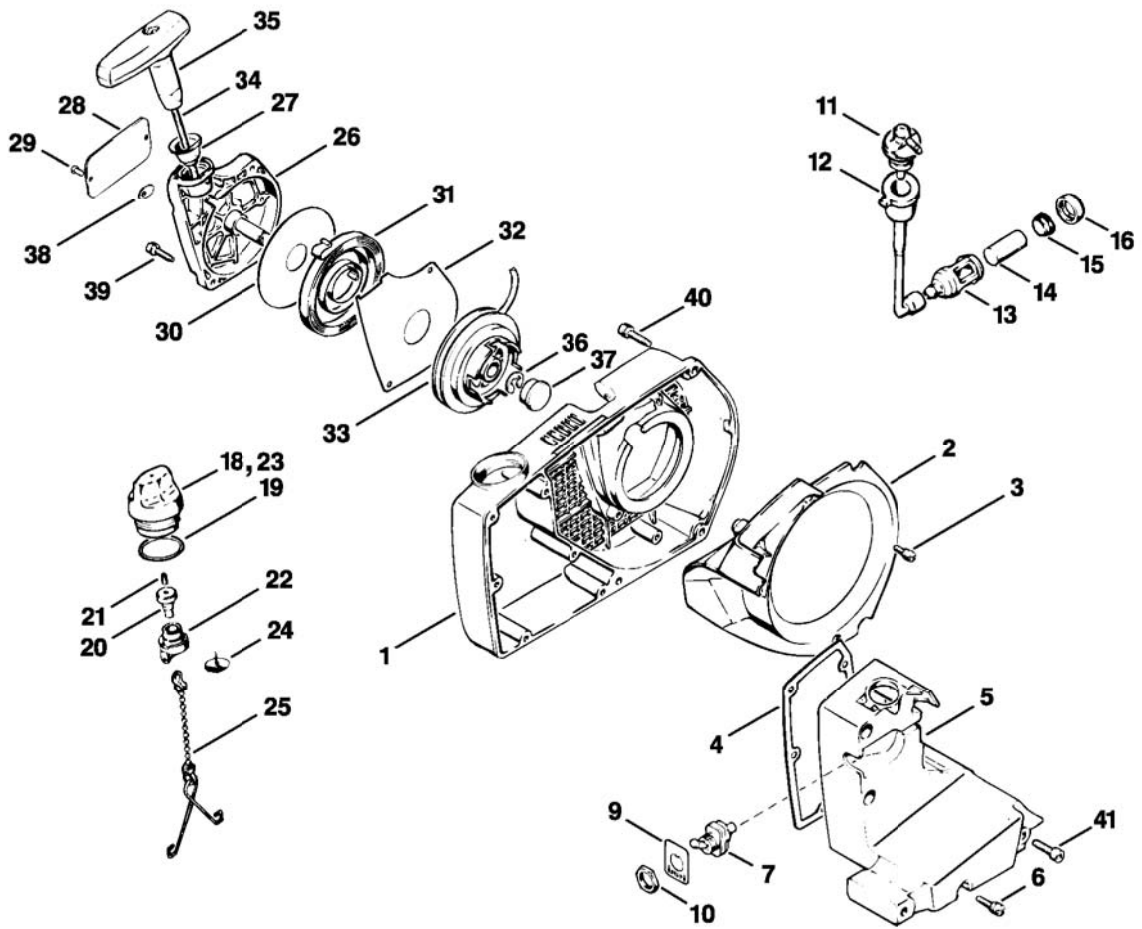
Illustration D Ignition armature, Flywheel

Ref.Nr.	Item code	Quantity	Description
22	1113 404 8600	2	Plug
23	1113 404 8700	2	Plug
24	9097 021 0510	2	Countersunk screw 3.5x9.5
25	9210 261 1140	1	Hexagon nut M8x1
26	1113 640 3600	1	Oil filler cap □ 27
27	0000 992 6305	1	Sealing ring
28	1113 400 1201	1	Flywheel, electronic ignition
	1114 007 1012	1	Electronic ignition conversion kit □ 29 - 35
29	1118 400 1001	1	Trigger unit
30	1113 405 1901	1	Bracket
31	9041 216 0300	1	Pan head screw M3x4
32	9041 216 0610	1	Pan head screw M4x6
33	1111 440 1900	1	Lead
34	1113 440 1106	1	Short circuit wire
35	1113 405 8810	1	Hose

(1) 030, (2) 031

Illustration E Fan housing, Starter cover

Printed from MediaCat



113FT0081 A

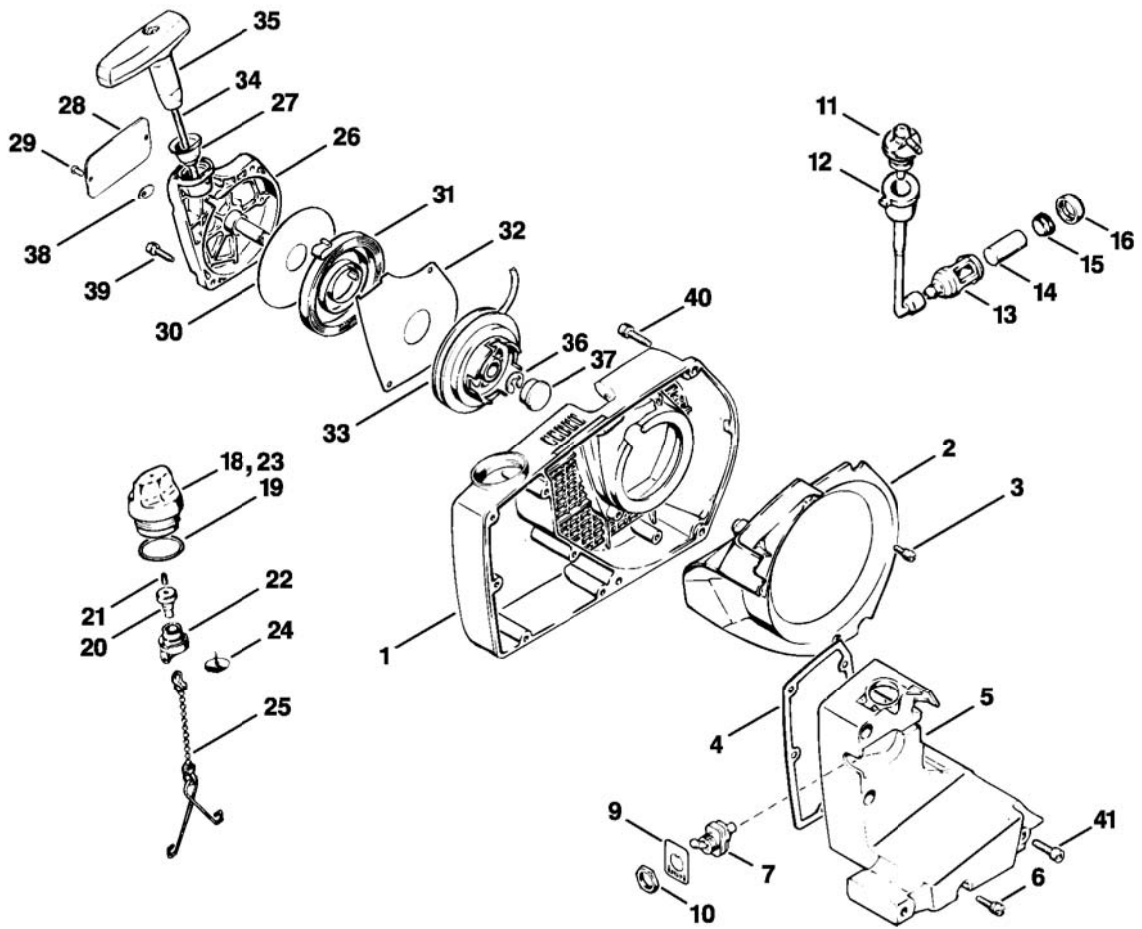
Illustration E Fan housing, Starter cover

Ref.Nr.	Item code	Quantity	Description
1	1113 084 1000	1	Fan housing
2	1113 084 7801	1	Segment
3	9048 319 0660	3	Pan head screw M4x12
4	1113 359 0700	1	Gasket
5	1113 351 0501	1	Tank housing
6	9048 319 0680	6	Pan head screw M4x16
7	1110 430 0202	1	Stop switch
9	0000 967 3506	1	Label
10	9211 260 1430	1	Hexagon nut M12x0.75
11	1113 353 2500	1	Elbow connector
12	1113 358 7700	1	Hose
13	1115 350 3503	1	Pickup body □ 14 - 16
14	1110 358 1800	1	Filter
15	1115 358 8200	1	Weight
16	1115 358 2500	1	Cap
18	1114 350 0502	1	Filler cap □ 19 - 22
19	9645 945 2620	1	O-ring 23x2.5
20	1110 353 8100	1	Insert
21	0000 951 5800	1	Grub screw
22	1110 353 2108	1	Valve body
23	1114 350 0500	1	Filler cap (B) □ 19, 22 - 25
24	1110 353 1600	1	Valve
25	1117 350 0901	1	Filler cap retainer

(1) 030, (2) 031

Illustration E Fan housing, Starter cover

Printed from MediaCat



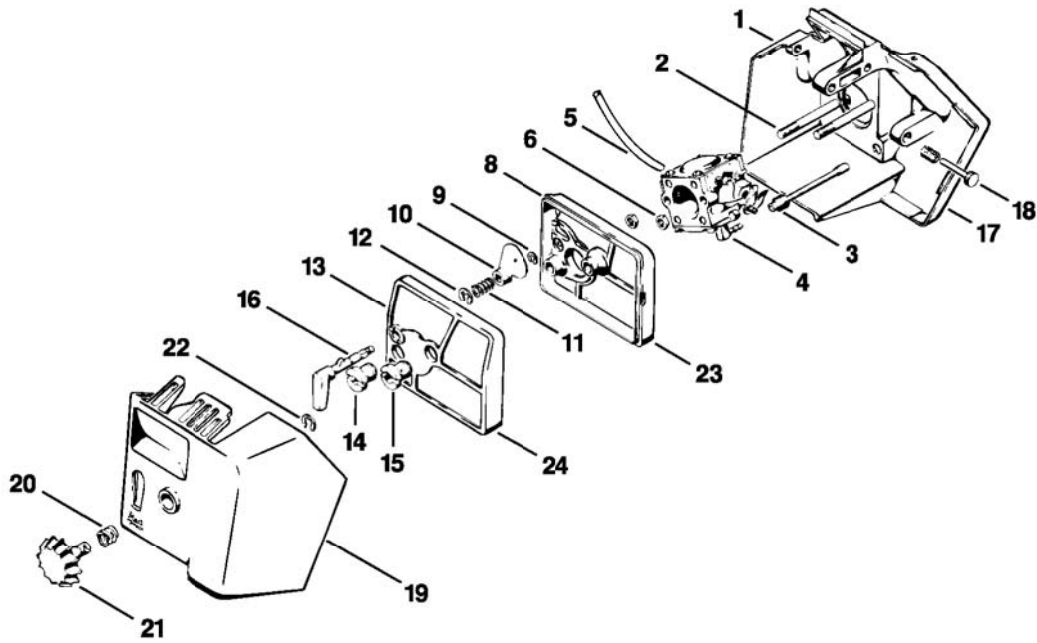
113FT0081 A

Illustration E Fan housing, Starter cover

Ref.Nr.	Item code	Quantity	Description
	1113 190 0405	1	Starter cover with rewind starter □ 26 - 37
26	1113 190 0410	1	Starter cover □ 27 - 29
27	1110 084 9102	1	Bushing
28	0000 967 2020	1	Nameplate STIHL
29	0000 974 1000	2	Round head rivet 3x6
30	1113 195 9000	1	Washer
31	1113 195 1600	1	Rewind spring
32	1113 195 6400	1	Shim
33	1113 190 1005	1	Rope rotor
34	1113 195 8200	1	Starter rope Ø 3.5x960mm
35	1121 195 3400	1	Starter grip
36	9460 624 0700	1	E-clip 7
37	1113 195 7000	1	Cap
38	1113 195 6500	1	Strap
39	9048 319 0680	3	Pan head screw M4x16
40	9048 216 1010	3	Pan head screw M5x18
41	9036 341 0980	1	Socket head screw M5x16

(1) 030, (2) 031

Printed from MediaCat

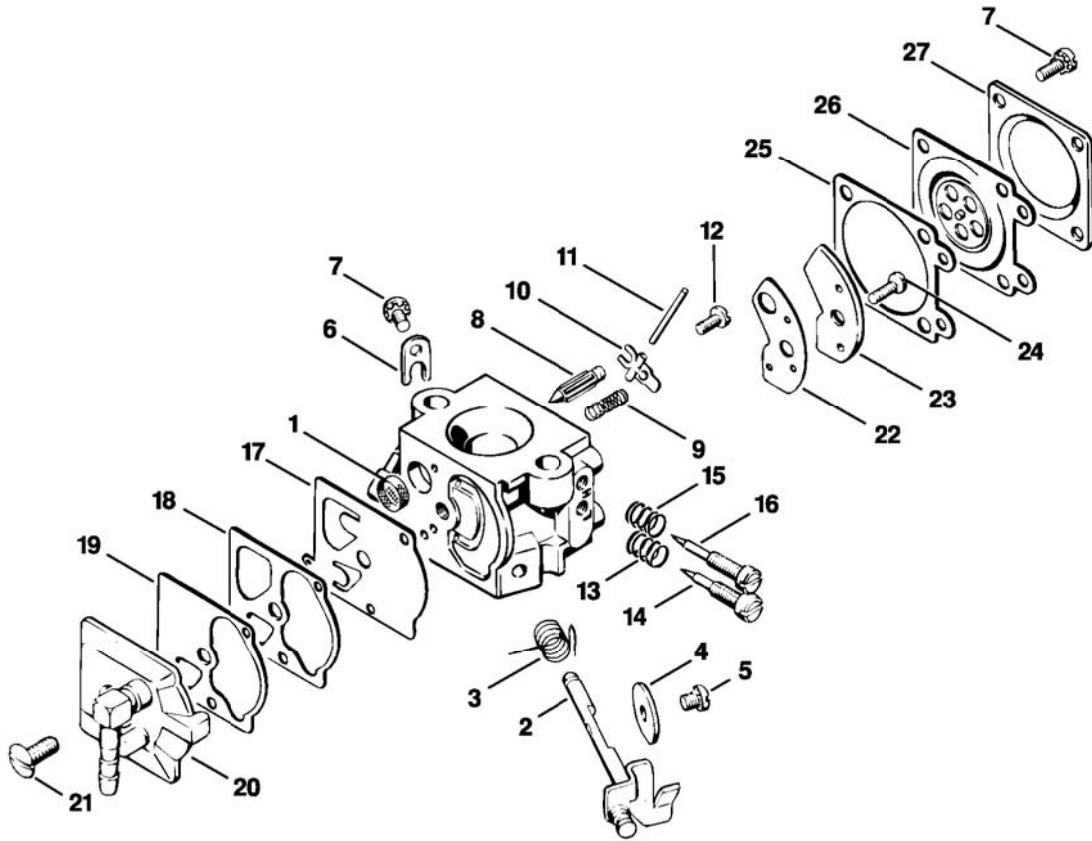


113FT0101A

Illustration F Carburetor box, Air filter, Extras

Ref.Nr.	Item code	Quantity	Description
1	1113 141 0400	1	Carburetor box
2	9121 323 1110	2	Stud M5x50x24
3	1113 141 8600	1	Impulse hose
4	1113 120 0602	1	Carburetor WA-2C
5	1113 141 8605	1	Hose
6	9210 260 0700	2	Hexagon nut M5
	1113 120 1601	1	Air filter □ 8 - 16
8	1113 120 1610	1	Air filter
9	9460 624 0320	1	E-clip 3.2
10	1113 121 2900	1	Choke shutter
11	0000 997 0721	1	Compression spring
12	9460 624 0500	1	E-clip 5
13	1113 120 1600	1	Air filter
14	1113 140 9510	1	Slotted nut
15	1113 141 8310	1	Slotted nut
16	1113 123 7310	1	Lever
17	0000 997 0626	1	Helical spring
18	1115 122 6200	1	Idle speed adjustment screw
19	1113 141 1000	1	Carburetor box cover
20	0000 997 0927	1	Compression spring
21	1113 140 9200	1	Twist lock
22	9460 624 0500	1	E-clip 5
	1113 120 1603	1	Air filter, flocked (B) □ 9 - 12, 14, 15, 23, 24
23	1113 120 1612	1	Air filter, flocked (B)
24	1113 120 1602	1	Air filter, flocked (B)

(1) 030, (2) 031

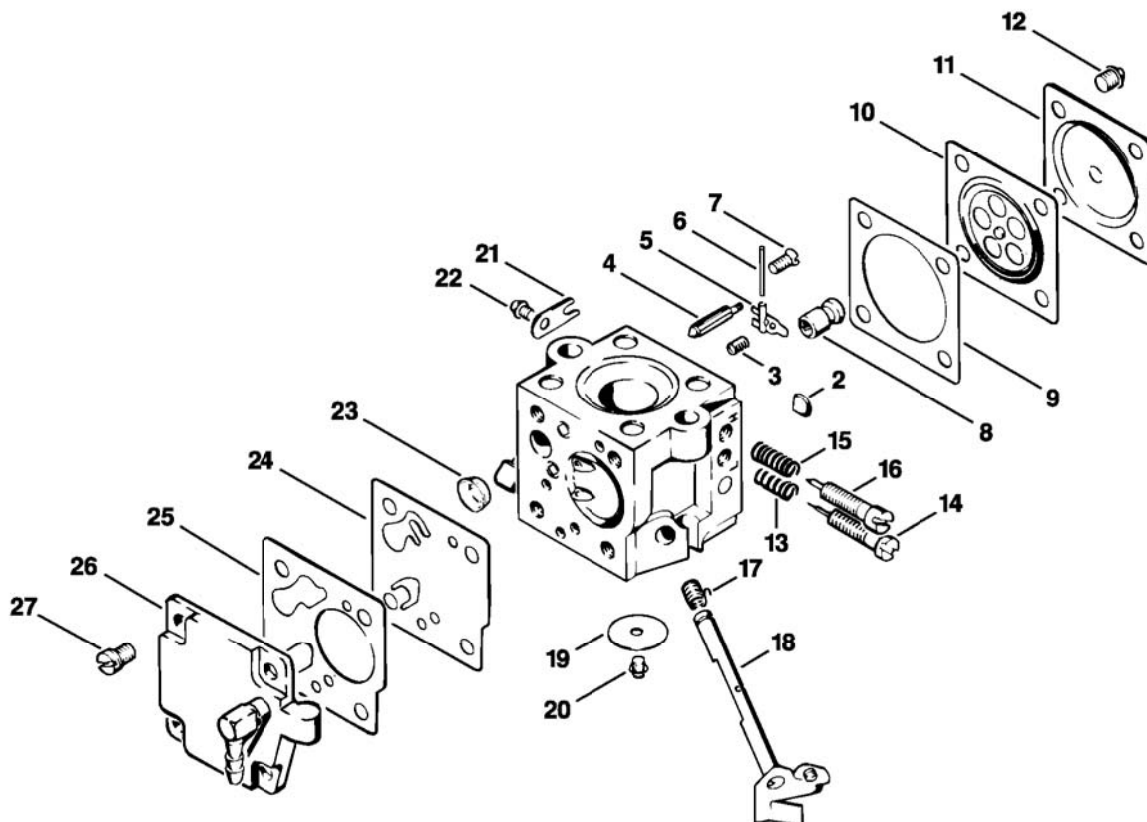


113FT0121A

Illustration **G** Carburetor Walbro

Ref.Nr.	Item code	Quantity	Description
	1113 120 0602	1	Carburetor WA-2C □ 1 - 27
1	1114 121 7800	1	Strainer
2	1113 120 7105	1	Throttle shaft with lever
3	1113 122 3205	1	Torsion spring
4	1114 121 3300	1	Throttle shutter
5	1110 122 7400	1	Round head screw
6	1110 122 9300	1	Clip
7	1106 122 7400	5	Round head screw
8	1110 121 5100	1	Inlet needle
9	1114 122 3000	1	Spring
10	1113 121 5000	1	Inlet control lever
11	1113 121 9200	1	Spindle
12	1114 122 7400	1	Round head screw
13	1110 122 3030	1	Spring
14	1113 122 6805	1	Low speed adjustment screw
15	1106 122 3000	1	Spring
16	1114 122 6700	1	High speed adjustment screw
	1114 007 1005	1	Set of diaphragms (B) □ 17 - 19
17	1114 121 4800	1	Pump diaphragm
18	1114 129 0900	1	Gasket
19	1114 121 4600	1	Suction chamber diaphragm (B)
20	1113 121 0805	1	End cover
21	1114 122 7100	1	Screw
22	1113 129 0905	1	Gasket
23	1113 121 7400	1	Plate
24	1110 122 7800	1	Oval head screw
25	1113 129 0900	1	Gasket
26	1113 121 4700	1	Metering diaphragm
27	1113 121 0800	1	End cover

(1) 030, (2) 031



113FT0131A

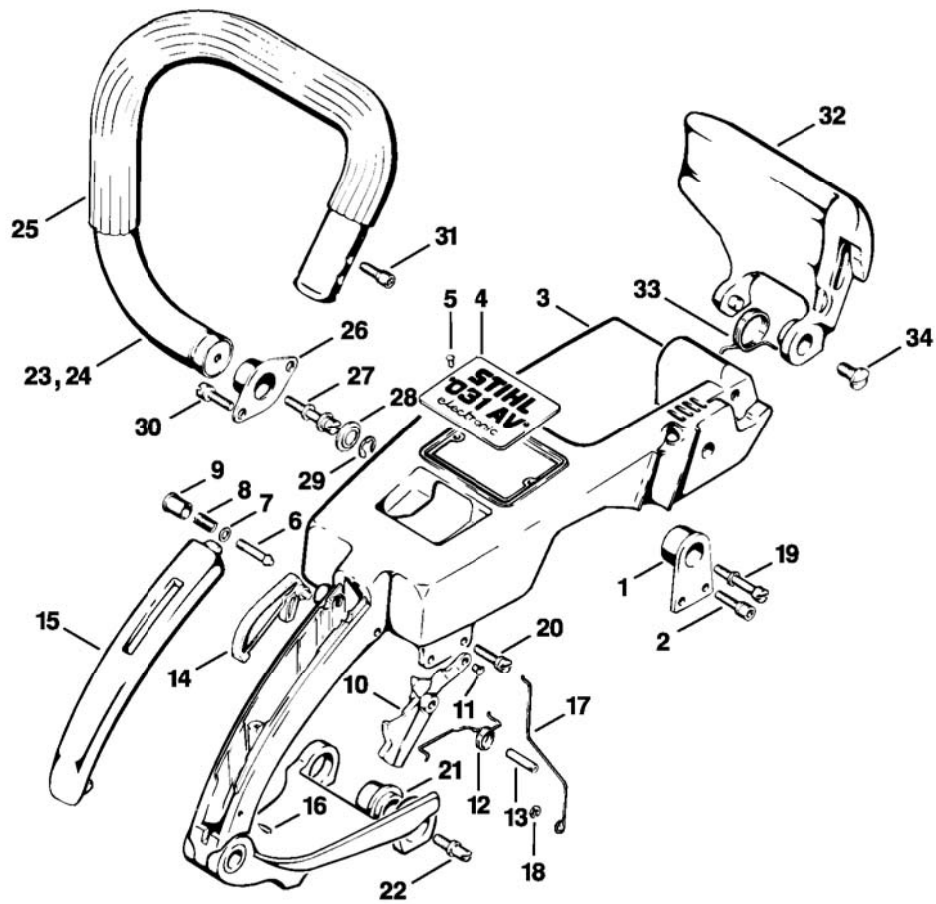
Illustration H Carburetor Tilloston

Ref.Nr.	Item code	Quantity	Description
	* 1113 120 0600	1	Carburetor HU-3G → 4 970 520 (26.78)
2	* 1113 122 9400	1	Plug → 4 970 520 (26.78)
3	* 1113 122 3000	1	Spring → 4 970 520 (26.78)
4	* 1110 121 5100	1	Inlet needle → 4 970 520 (26.78)
5	* 1113 121 5000	1	Inlet control lever → 4 970 520 (26.78)
6	* 1113 121 9200	1	Spindle → 4 970 520 (26.78)
7	* 1110 122 7800	1	Oval head screw → 4 970 520 (26.78)
8	* 1113 121 5400	1	Valve jet → 4 970 520 (26.78)
9	* 1113 129 0900	1	Gasket → 4 970 520 (26.78)
10	* 1114 121 4700	1	Metering diaphragm → 4 970 520 (26.78)
11	* 1113 121 0800	1	End cover → 4 970 520 (26.78)
12	* 1106 122 7400	4	Round head screw → 4 970 520 (26.78)
13	* 1106 122 3000	1	Spring → 4 970 520 (26.78)
14	* 1113 122 6800	1	Low speed adjustment screw → 4 970 520 (26.78)
15	* 1106 122 3000	1	Spring → 4 970 520 (26.78)
16	* 1113 122 6700	1	High speed adjustment screw → 4 970 520 (26.78)
17	* 1113 122 3200	1	Torsion spring → 4 970 520 (26.78)
18	* 1113 120 7100	1	Throttle shaft with lever → 4 970 520 (26.78)
19	* 1113 121 3300	1	Throttle shutter → 4 970 520 (26.78)
20	* 1110 122 7400	1	Round head screw → 4 970 520 (26.78)
21	* 1110 122 9300	1	Clip → 4 970 520 (26.78)
22	* 1110 122 7400	1	Round head screw → 4 970 520 (26.78)
23	* 4221 121 7800	1	Strainer → 4 970 520 (26.78)
24	* 1113 121 4800	1	Pump diaphragm → 4 970 520 (26.78)
25	* 1113 129 0910	1	Gasket → 4 970 520 (26.78)
26	* 1113 121 0810	1	End cover → 4 970 520 (26.78)
27	* 1113 122 7700	4	Oval head screw → 4 970 520 (26.78)

(1) 030, (2) 031

Illustration J Handle frame, Handlebar

Printed from MediaCat



113FT0141A

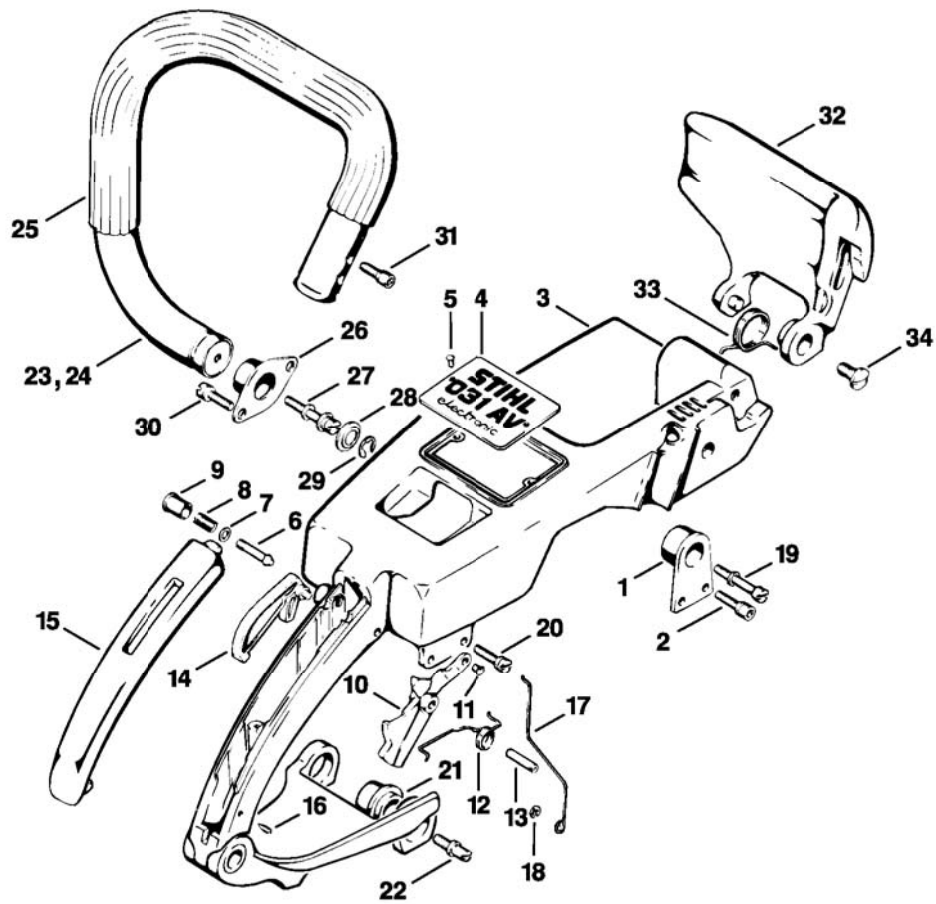
Illustration J Handle frame, Handlebar

Ref.Nr.	Item code	Quantity	Description
1	1113 790 9901	1	Annular buffer
2	9040 346 1010	1	Socket head screw M5x18
3	1113 790 5601	1	Handle frame
4	0000 967 1552	1	Model plate 031 AV
	0000 967 1553	1	Model plate 031 AVE
	0000 967 1554	1	Model plate 031 AVEQ
	0000 967 1587	1	Model plate 031 AVQ
5	0000 974 1000	2	Round head rivet 3x6
6	1113 182 8900	1	Pin
7	0000 958 0403	1	Washer
8	0000 997 0603	1	Compression spring
9	1113 182 9305	1	Starting throttle lock
10	1115 180 1501	1	Throttle trigger □ 11
11	9415 415 2240	1	Hollow rivet 3x0.3x5
12	0000 998 1205	1	Torsion spring
13	9371 470 2640	1	Cylindrical pin 5x24
14	1115 182 0801	1	Trigger interlock
15	1115 791 0601	1	Handle molding
16	9132 216 0610	1	Grub screw M4x6
17	1113 182 1505	1	Throttle rod
18	9460 624 0320	1	E-clip 3.2
19	1113 791 6110	1	Collar screw
20	9048 216 1010	3	Pan head screw M5x18
21	1113 790 9910	2	Annular buffer
22	1113 791 6102	2	Collar screw
23	1113 790 1701	1	Handlebar with hose 365mm / 14 3/8"
25	0000 791 2002	1	Handle hose Ø 21 mm x 1 m / 7/8x40"

(1) 030, (2) 031

Illustration J Handle frame, Handlebar

Printed from MediaCat

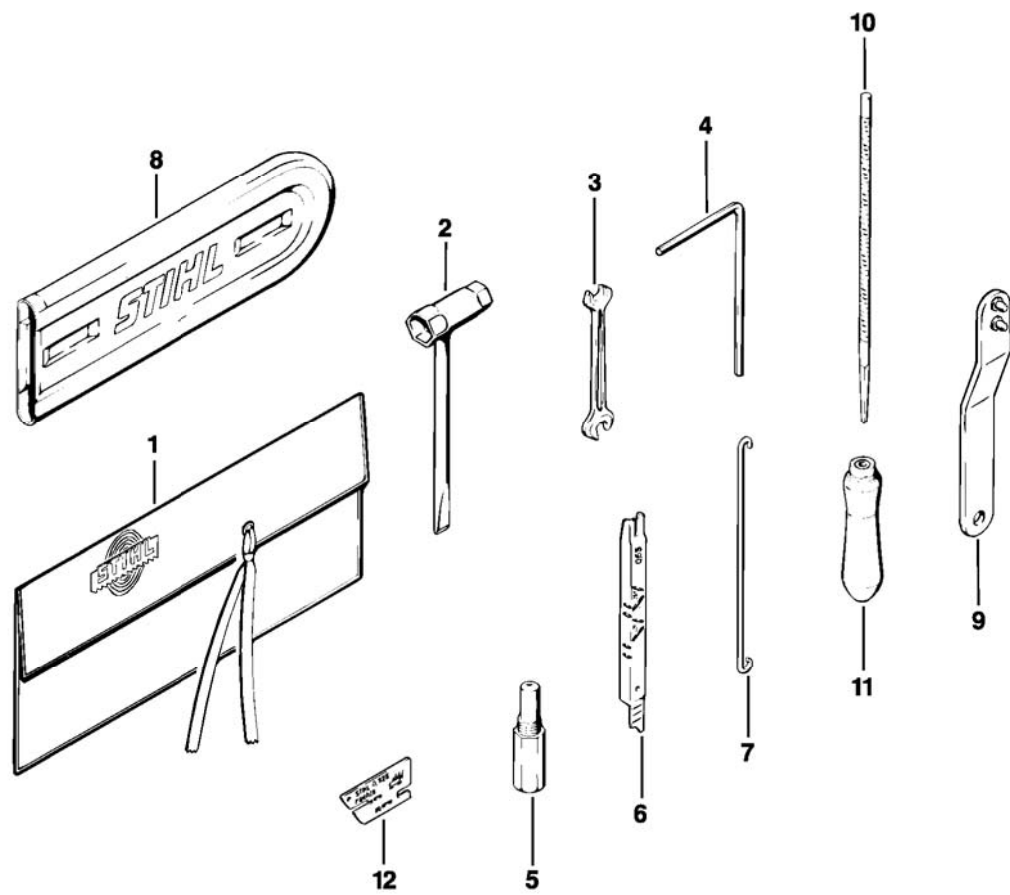


113FT0141A

Illustration J Handle frame, Handlebar

Ref.Nr.	Item code	Quantity	Description
26	1115 790 9901	1	Annular buffer
27	1113 791 6101	1	Collar screw
28	1113 791 9700	1	Washer
29	9460 624 0700	1	E-clip 7
30	9048 216 1010	2	Pan head screw M5x18
31	9036 341 1020	2	Socket head screw M5x20
32	1113 792 9106	1	Hand guard
	1114 792 9106	1	Hand guard
33	1113 791 8200	1	Torsion spring
34	0000 951 2904	1	Oval head screw M6x3.2x12

(1) 030, (2) 031

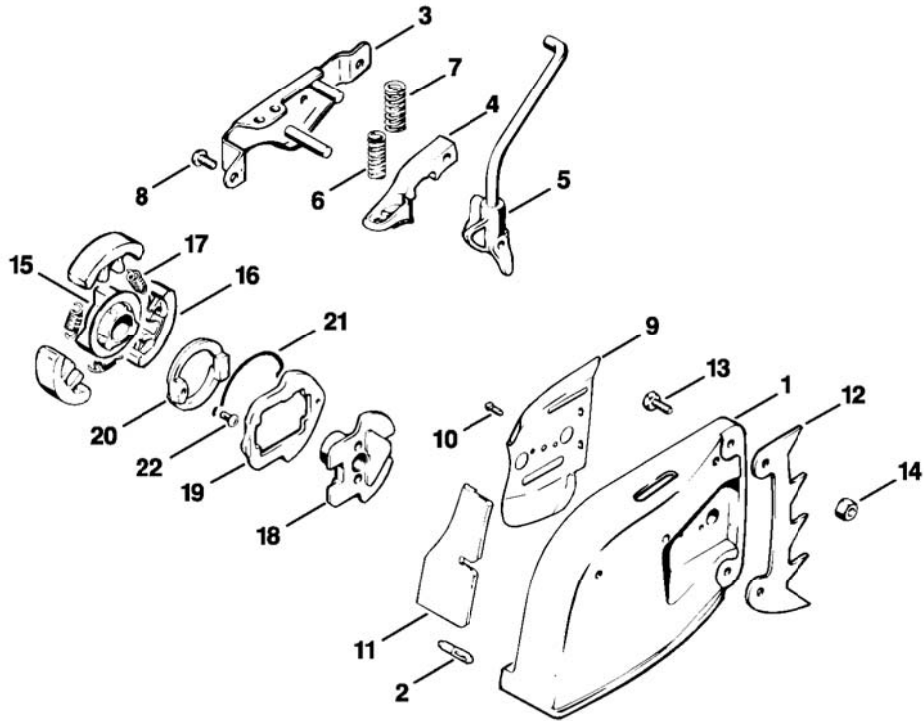


113FT0161A

Illustration **K** Tools, Extras

Ref.Nr.	Item code	Quantity	Description
	1113 890 1400	1	Tool kit □ 1 - 7
1	0000 891 0800	1	Tool roll
2	1110 890 3401	1	Combination wrench
3	0811 012 1152	1	Wrench 8x10
4	0811 270 1080	1	Allen key 4x70x130
	0000 890 2300	1	Screwdriver (A)
5	1107 191 1201	1	Locking screw
6	1110 893 4000	1	Filing gauge
7	1110 893 8800	1	Hook
8	0000 792 9111	1	Chain scabbard
9	1113 890 3600	1	Wrench (B)
10	0811 411 8108	1	Round file Ø 5.5x200mm (B)
	0811 411 8088	1	Round file Ø 4.8x200mm (B)
11	0811 490 7860	1	File handle A100 (B)
12	5605 893 4000	1	Filing gauge 0.325" (B)
	1113 900 5000	1	STIHL repair kit 031 AV (A, B)
	1108 890 2500	1	Grease gun (A, B)
	1113 007 1050	1	Set of gaskets 031 (A, B)
	1113 007 1060	1	Set of carburetor parts 032 (A, B)
	1118 007 1060	1	Set of carburetor parts (A, B)
	0000 930 2201	1	Ignition lead 10m (A, B)
	0000 930 2202	1	Ignition lead 10m (A, B)
	0000 930 2203	1	Starter rope Ø 3.5mm x 30.5m (A, B)

(1) 030, (2) 031



113FT0181A

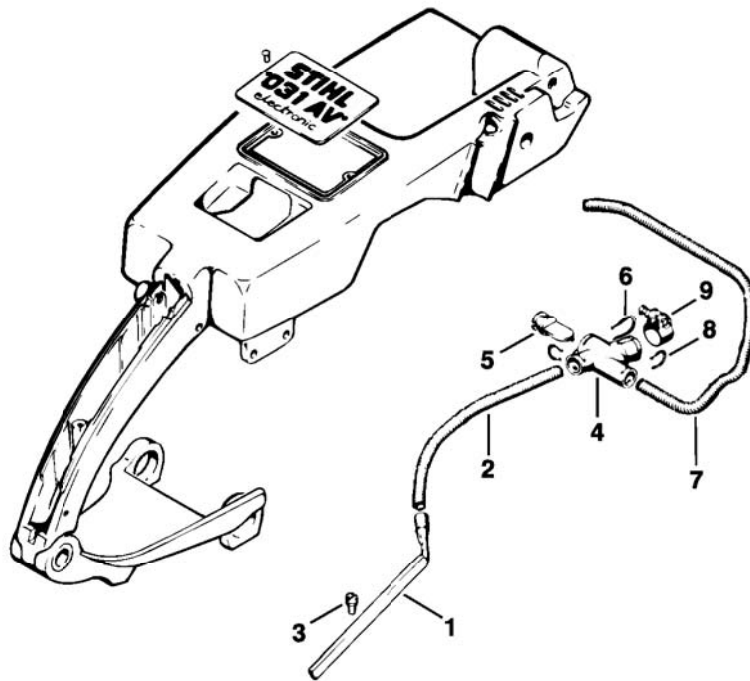
Illustration

L

Chain sprocket cover, Brake shoe,
Driving disc

Ref.Nr.	Item code	Quantity	Description
	1113 640 1703	1	Chain sprocket cover □ 1 - 14
1	1113 640 1704	1	Chain sprocket cover □ 2
2	0000 971 0608	1	Pin
3	1113 640 4901	1	Cover plate
4	1113 640 2801	1	Brake shoe
5	1113 640 2302	1	Cam
6	0000 997 1100	1	Helical spring
7	0000 997 0900	1	Helical spring
8	9079 319 0950	2	Flat head screw M5x10
9	1113 664 1100	1	Outer side plate
10	9441 065 1910	2	Round head rivet 3x8
11	1113 656 1501	1	Guard plate
12	1110 664 0501	1	Bumper spike
13	9008 319 0960	2	Hexagon head screw M5x12
14	9214 320 0700	2	Lock nut M5
	1113 160 2002	1	Clutch □ 15 - 17
15	1113 160 2310	1	Carrier
16	1113 162 0802	3	Clutch shoe
17	0000 997 5811	3	Tension spring
	1113 160 3400	1	Drive disc □ 18 - 22
18	1113 162 3601	1	Drive disc
19	1113 162 3901	1	Slide control
20	1113 160 4000	1	Locking slide □ 21, 22
21	1113 162 7801	1	Spring
22	1113 162 1200	1	Rivet

(1) 030, (2) 031



113FT019 | A

Ref.Nr.	Item code	Quantity	Description
			Extras: Heating
1	1113 141 5205	1	Tube
2	1113 141 5400	1	Hose
3	9047 319 0630	5	Pan head screw M4x8
	1113 140 5000	1	Valve □ 4 - 6
4	1113 141 5000	1	Valve
5	1113 141 5300	1	Throttle
6	1113 141 5100	1	Clip
7	1113 141 5405	1	Hose
8	1113 141 5105	2	Clip
9	9773 021 1400	1	Hose clamp 14

(1) 030, (2) 031